


I N T R O D U C I N G



Wisteria

VILE PARLE - W

CHANDAN CHS. LTD.



Nature has always been a great source of inspiration in one's life. Living amidst greenery; walking along tree lined pathways and admiring the various shades of nature is a true blessing in today's world.

“Wisteria” is inspired by the beautiful flowers symbolic of love and sensitivity. Enhancing the magical surrounding, the blossoms historically symbolize long life and have been the inspiration for the design of your homes.

The fast paced city life calls for some serenity to relax and gear up for the race.

Nothing's better than coming home to nature and finding solitude. Wisteria is conceptualized to offer a home amidst nature to bring tranquility to your doorstep. Located in an enviable location of Vile Parle (West), the property is designed to make one feel like living under the canopy of dangling wisteria flowers.

1, 2 & 3 BED RESIDENCES



A LOCATION THAT PUTS YOU IN THE MIDST OF IT ALL

An address of repute, Wisteria has the prime advantage of being in close proximity to the S.V. Road with many reputed educational institutions in the neighborhood. Shopping, banking, food and entertainment are all available within a short distance from the location. The neighborhood has been popular for its culture and secure and healthy social environment.



Andheri Railway Station - 1.2 Kms
Vile Parle Railway Station - 1.2 Kms..



Andheri Metro Station - 2.3 Kms.



International Airport - 5.6 Kms.
Domestic Airport - 2.9 Kms.



S.V. Road - 0.6 Kms.
Western Express Highway - 2.1 Kms.
Link Road - 2.1 Kms.



Lallubhai Park - 0.4 Kms.
Sardar Vallabhbhai Patel Park - 0.2 Kms.



Jain Derasar - 1.0 Km.



CNM School - 0.8 Kms.
Mithibai College - 2.2 Kms.
St. Joseph's Convent High School - 1.2 Kms.



Shoppers Stop - 1.0 Km.
Alpha Stores - 1.1 Kms.
Prime Mall - 1.1 Kms.



McDonalds - 1.7 Kms.
5 Spice - 1.4 Kms.
Kailash Parbat - 1.4 Kms.



Sun City- 0.8 Kms.
PVR Cinema - 2.7 Kms.



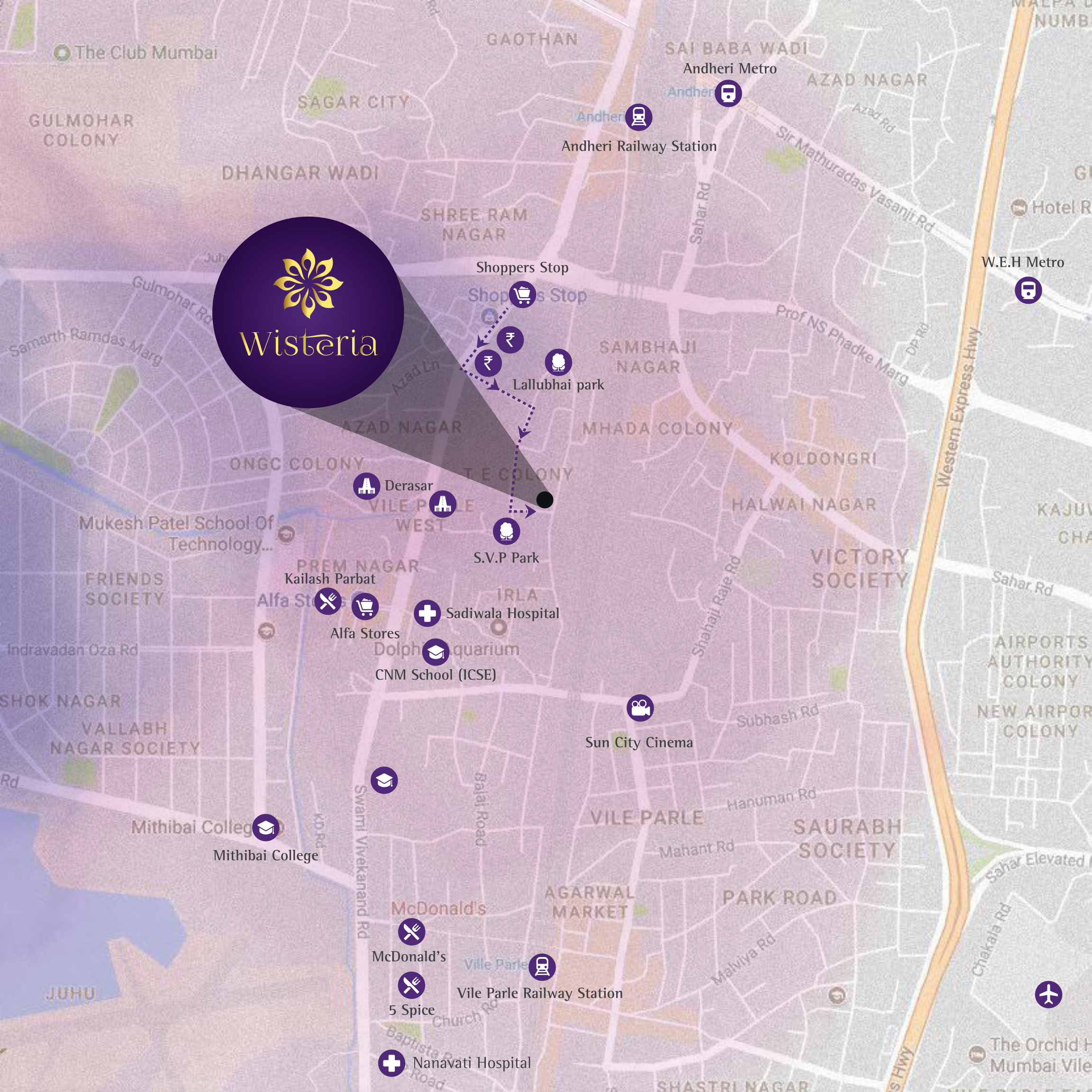
Sadiwala Hospital- 0.9 Kms.
Kokilaben Dhirubhai Ambani Hospital - 4.1 Kms.
Nanavati Hospital - 2.0 Kms.



Hotel Sahara Star- 2.8 Kms.



ICICI Bank - 0.6 Kms.
HDFC Bank - 0.8 Kms.
SBI Bank - 0.8 Kms.



Shoppers Stop

Shoppers Stop

₹

₹

Lallubhai park

Derasar

Derasar

S.V.P Park

Kailash Parbat

Alfa Stores

Alfa Stores

Sadiwala Hospital

Dolphin Aquarium

CNM School (ICSE)

Sun City Cinema

Mithibai College

Mithibai College

McDonald's

McDonald's

McDonald's

5 Spice

Nanavati Hospital

Vile Parle Railway Station

W.E.H Metro

The Orchid Hotel



Amenities

RELAX AND REJUVENATE IN YOUR SAFE HAVEN

AT WISTERIA,
THE AMENITIES HAVE BEEN
PLANNED TO ENSURE
YOUR COMFORT AND CONVENIENCE.

VITRIFIED TILE FLOORING

GRANITE KITCHEN PLATFORM WITH S.S. SINK, EXHAUST FAN, VITRIFIED TILES DADO

TOILET IN VITRIFIED TILES, SANITARY WARE, C.P. FITTINGS, GEYSER AND EXHAUST FAN IN ALL TOILETS

ANODIZED ALUMINIUM WINDOWS

GYPSUM / POP FALSE CEILING IN LIVING DINING AREA WITH PLASTIC AND LUSTER PAINT

ENTRANCE LOBBY WITH SECURITY DESK WITH CCTV MONITOR

LOBBY FINISHED IN COMPOSITE / VITRIFIED TILES

FITNESS CENTER AND SOCIETY OFFICE

ELEVATORS / LIFTS SHALL BE OF OTIS / SCHINDLER / THYSSENKRUPP / KONE MAKE OR

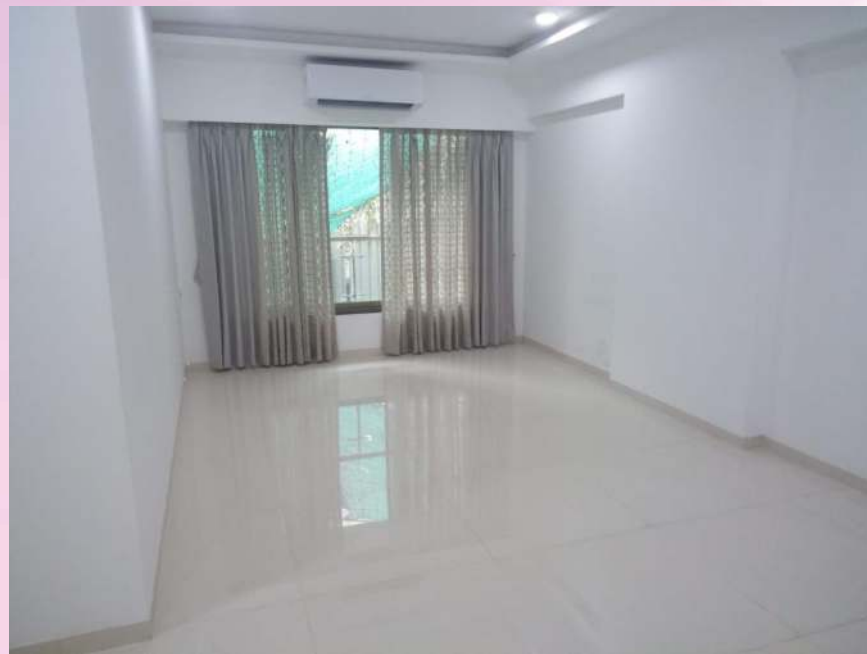
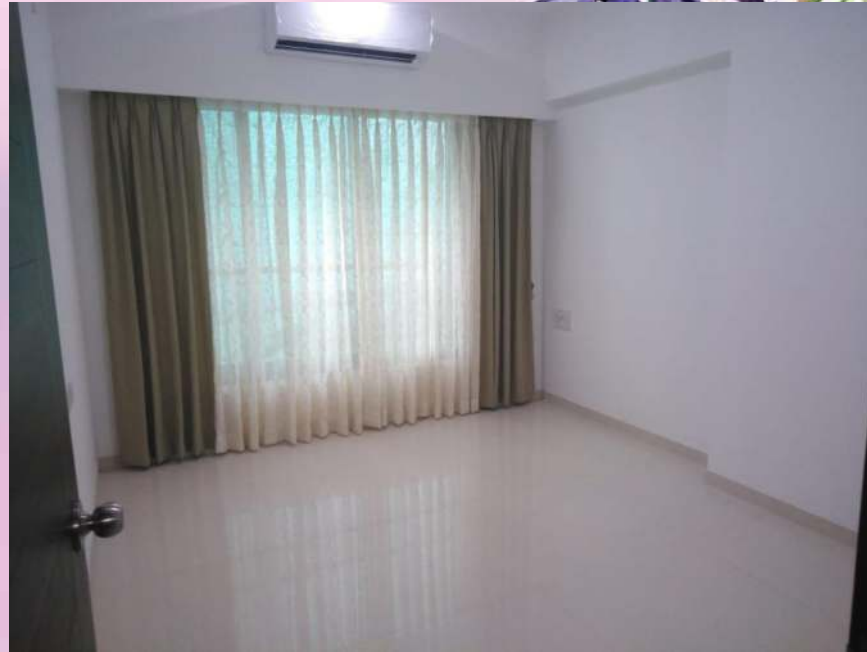
EQUIVALENT MAKE.



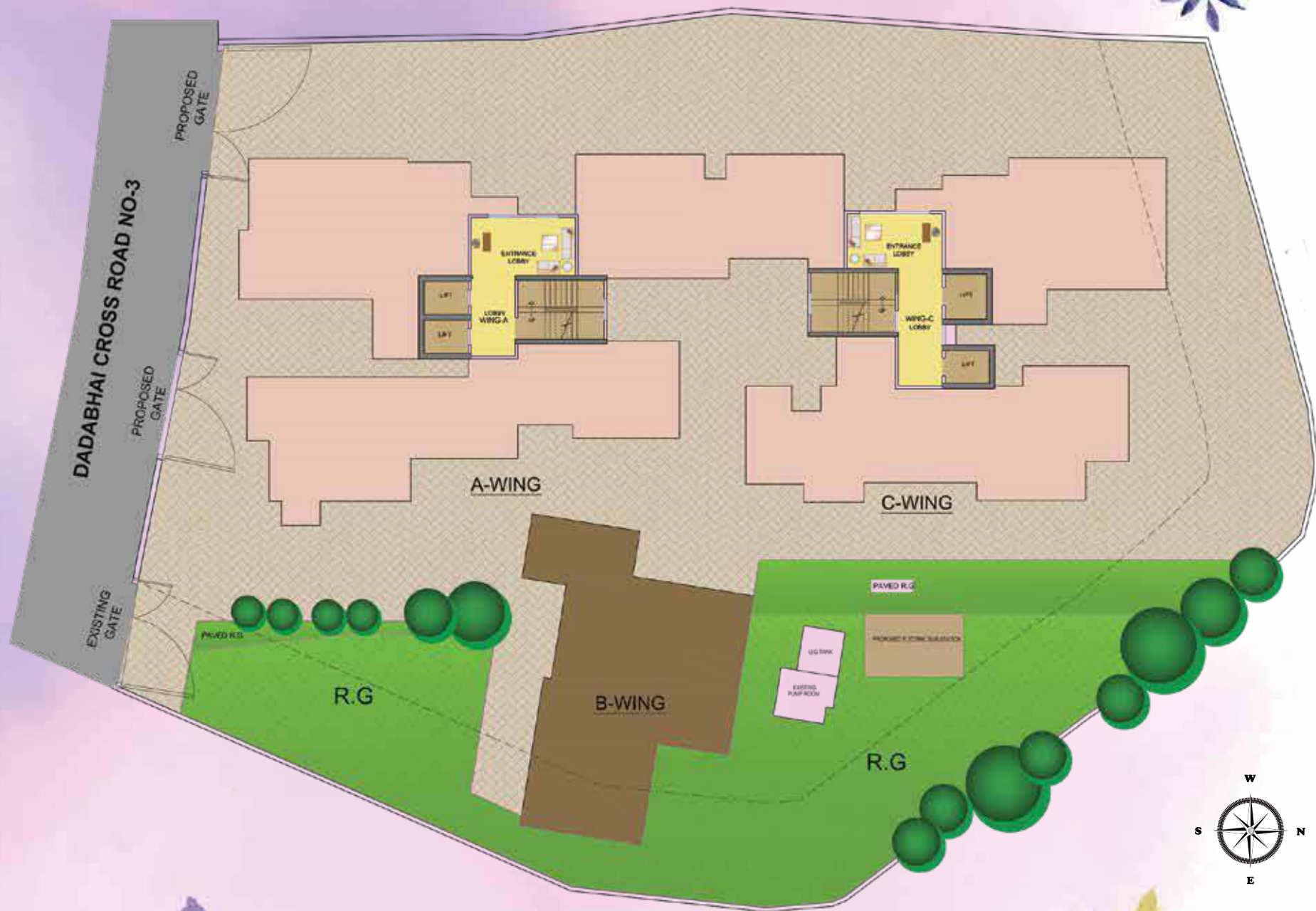
ACTUAL SITE
PHOTOGRAPHS



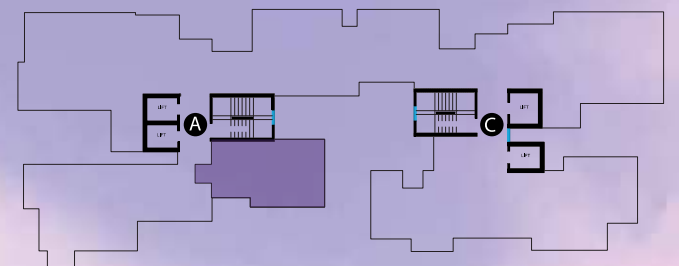
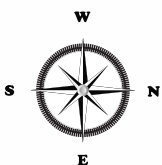
SAMPLE FLAT



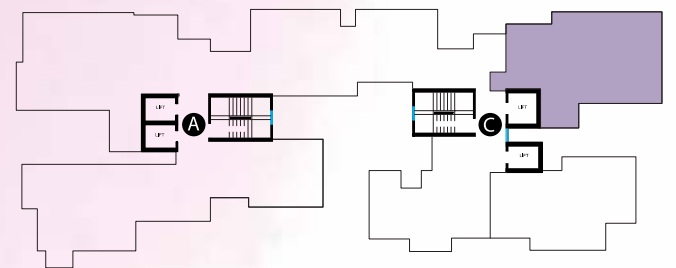
Layout plan



TYPICAL PLAN
'A' WING - FLAT NO. 01

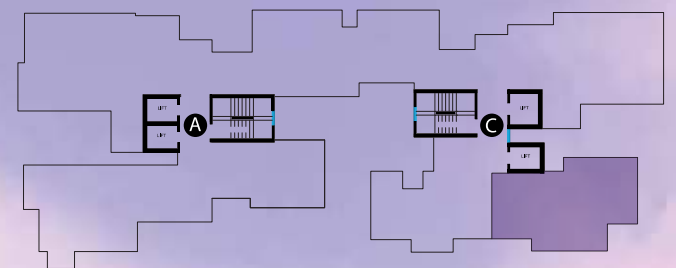
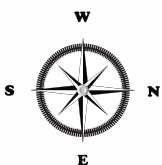


TYPICAL PLAN
'C' WING - FLAT NO. 04

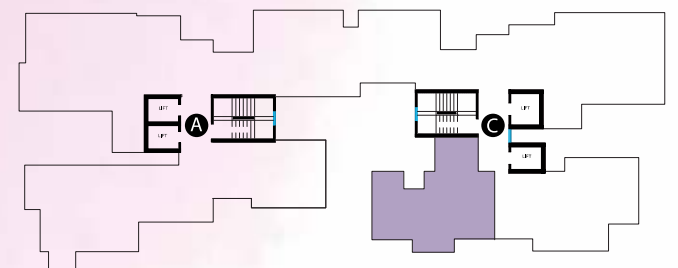
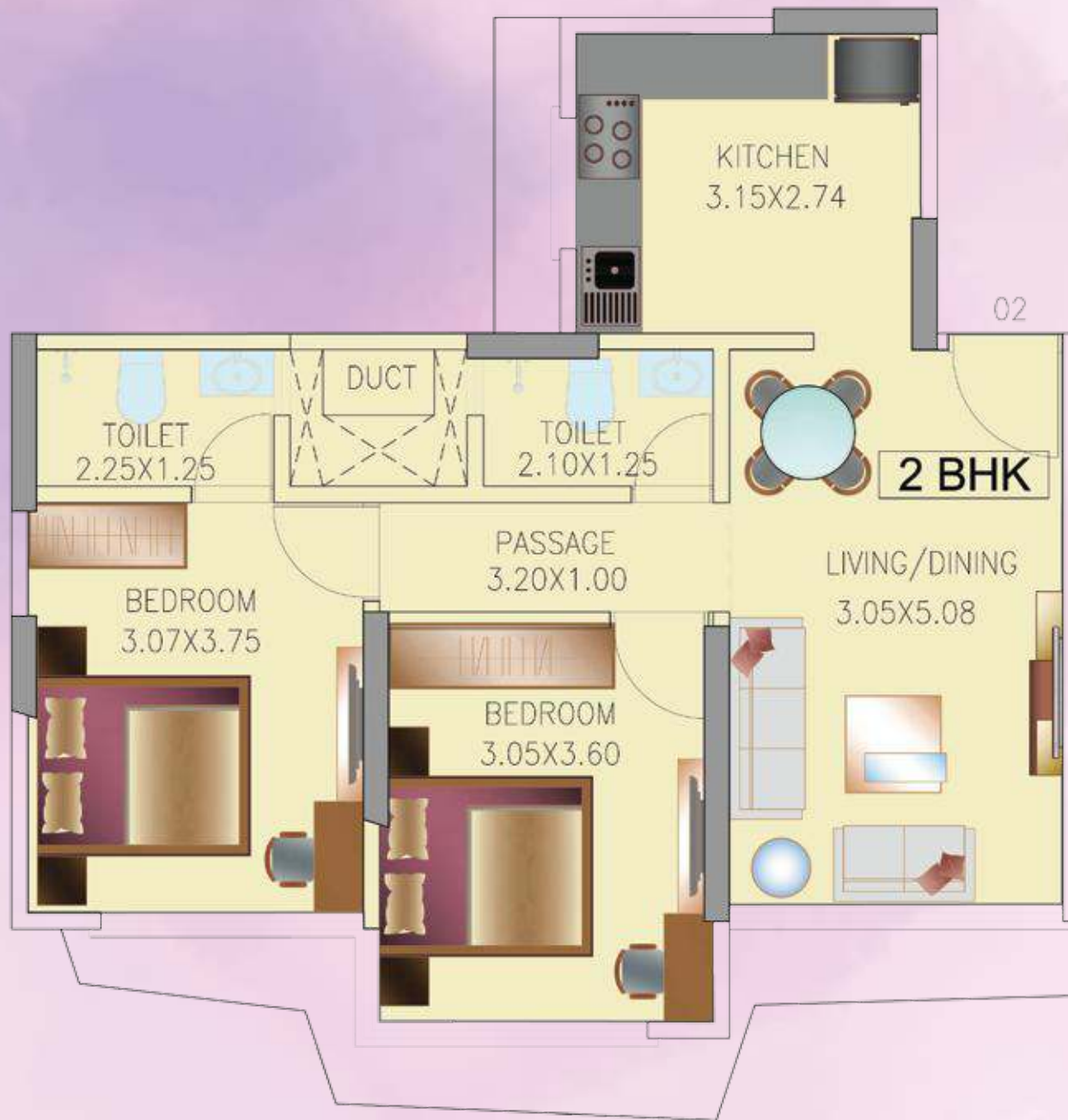




TYPICAL PLAN
'C' WING - FLAT NO. 01



TYPICAL PLAN
'C' WING - FLAT NO. 02






THE *Group*

Created with a penchant for delivering exuberant homes, AUM GM takes pride in delivering customer delight. Under the entrepreneurial vision and inspirational guidance of Mr. Ashvin Vora and Mr. Haresh Valia together they have delivered over 35 million sq. ft. of residential and commercial spaces

At AUM GM, we highly value our customers and continuously strive to build emotional connect and strong relations with our customers . With the vision to be the preferred provider of superior quality construction, we have consistently worked towards delivering the same.

With our visionary approach, strong market presence, experience, agility and diligence, we at AUM GM promise you the most comforting experience.

We are here to celebrate lives, to give you your address for life and you don't need a craven excuse for the future!



OUR Projects



Padma
Vile Parle - W, Mumbai



Elegant Business Park
Andheri - E, Mumbai



Costarica
Palm Beach Road, Navi Mumbai



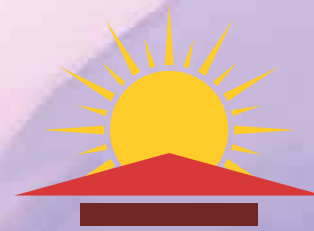
Tulsi Aura
Ghansoli, Navi Mumbai



G M DEVELOPERS

701, Amore, 7th Floor, Jn. of 2nd & 4th Road,
Khar (W), Mumbai - 400 052.
T: 2605 1616 / 2605 1617
www.wisteria.co.in

 9137552393



NIVASTI
BUILDERS & DEVELOPERS

Delivering with Diligence

www.nivasti.com

D-4 / 5 / 6, 1st Floor, Big Splash Bldg., Above Waman Hari Pethe,
Sector 17, Vashi, Navi Mumbai - 400 703.
T: 2766 8051 / 52 / 53 / 54
E: connect@nivasti.com

 83698 45286

Site Address: Wisteria, Chandan CHS, Dadabhai Cross Road No.3, Next to Sardar Vallabh Patel Park, Behind Surya Hospital, Vile Parle (W), India

MahaRERA No. P51800004733 | <http://maharera.mahaonline.gov.in>

Disclaimer: All specifications, images, plans, designs, facilities, amenities, dimensions, elevations, any other information's contained herein are indicative in respect of the project : Wisteria (Chandan CHS. Ltd.) and is registered with MAHARERA bearing reg. no. P51800004733, for details please refer <http://maharera.mahaonline.gov.in>. The project may be subject to revision/s and/or alteration/s in accordance with the approvals, orders, and/or in compliance with laws/regulation in force from time to time. Unless otherwise stated, all the images, visuals, materials and information contained herein are purely creative/artistic concepts and may not be actual representation of the product and/or any amenities. None of the above may be construed to form any basis of, and/or serve as an inducement or invitation for payment of any advance and/or deposit, to be made by a prospective customer under the relevant provisions of law or otherwise. The project is secured with 'Capriglobal Capital Limited bank' and no objection letter would be obtain at the relevant time if required.

Image is not an actual project image and is strictly for representations purpose only 'The actual image[s]/view[s] have been modified/enhanced for display and creative purposes. "Google maps as on September 2017, this is an approximate estimate as per google maps. For third party equipment[s]/appliance[s]: Warranty/Guarantee of the third party product/amenity is subject to the concerned supplier's/manufacture's corresponding Warranty/Guarantee terms and conditions.